



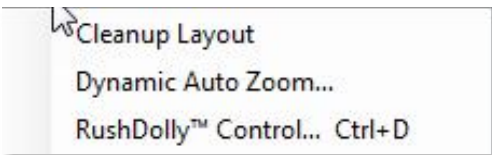
cool technology for

**PRODUCTION • PLAYBACK • STREAMING**

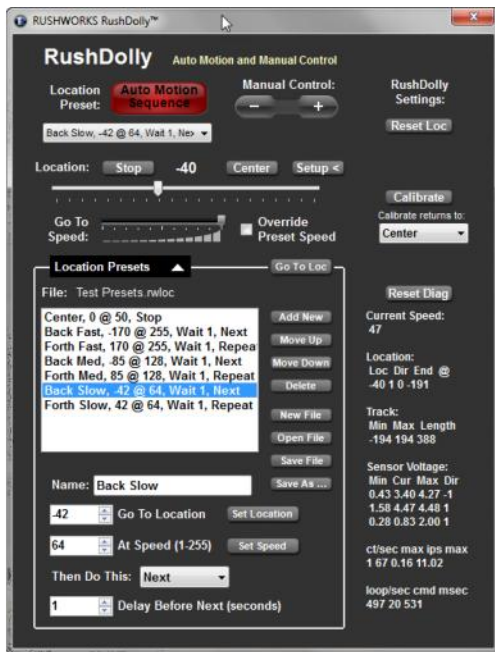


**RUSHDOLLY**  
ROBOTIC CAMERA PLATFORM™

**RUSHDOLLY** is the newest entry in our expanding catalog of robotic interfaces and devices designed to enhance the quality of video production by a single operator. It supports the theme of "Cameras in Motion" that sets RUSHWORKS apart from manufacturers of other integrated production systems.



It's controlled by our **Ctrl+R Camera and Motion Control Software**, as well as our **VDESK and REMO Integrated Production Systems**. It runs on one or more 8' sections of channel aluminum track, which can be suspended or floor mounted for versatility and preset position accuracy.



The control interface is similar to the Dynamic Auto Zoom setup for PTZ cameras, giving the operator precise control of start/stop positions, speed of travel, and multiple preset scripting.

It can be controlled manually by a control wheel or joystick, or by the selected Auto Motion Sequence which automates the dolly travel from point to point.

You'll use the expanded Location Presets dropdown to create your Dolly Scene Files, entering the Go To Location, At Speed value, and sequential script behavior.

You'll Save or Save As location preset files, Open or create New files or Delete files, and enter the location parameters for each preset as well as Name of the location File, which has the extension **.rwloc**

Once these are done, you can collapse the Location Presets dropdown and use the smaller control panel. Here you can Reset the Location, Calibrate the RushDolly position, change the Go To Speed, Override the Preset Speed, select any saved Location File, activate the Auto Motion Sequence, or use the Manual Control buttons.

[www.RUSHWORKS.tv](http://www.RUSHWORKS.tv)

888.894.7874