

SEGMENT R PRO™

File Segmenting • Transcoding • Audio Normalizing

with



INSTALLATION GUIDE

First, download the utility from the RUSHWORKS website
(www.RUSHWORKS.tv)

On the Home Page, click on **SEGMENT R PRO**
in the **Helpful Software Utilities** section.

Helpful Software Utilities

SEGMENT R PRO™

File Segmenting • Transcoding • Audio Normalizing

SegmentR PRO is a stand-alone utility for transcoding many file formats into MPEG-2 or H.264, and for creating “virtual segments” as metadata that are stored within a file. You can also save marked segments as multiple, individual files.



The SEGMENT R PRO bundles includes FileRx, a file reconstruction and audio normalization utility - featuring RUSHWORKS' Audio Componder - a two-pass algorithm for compression, expansion and peak limiting for constant level output. LKFS Normalization with True Peak output assures CALM Act compliance.

AGENDAPREP™

Text to CG Converter Software

AgendaPrep is a text formatting utility that converts typical meeting agenda items from Word, html or xml into screen-ready PNG files for display during meetings. Avoid hours of retying with this handy utility.

Then click on this icon at the bottom of the page ...



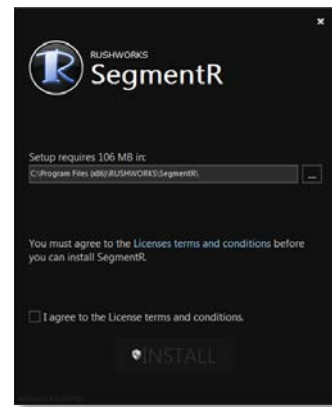
The installer will be placed in your Downloads folder:  [SegmentR_Installer.exe](#)

Double click the Installer icon.

- 1 The installation will begin.

You can review the [Licenses terms and conditions](#) by clicking on that link.

Click the checkbox next to "I agree to the License terms and conditions".



- 2 The green INSTALL button will appear. The default path for the installation is C:\ProgramFiles(x86)\RUSHWORKS\SegmentR\.

If you want to change the install location, click the 'browse for folder' button to the right of the install path.

Then click the INSTALL button.



- 3 You'll then see an installer status screen with a progressive green bar indicating the installation progress.

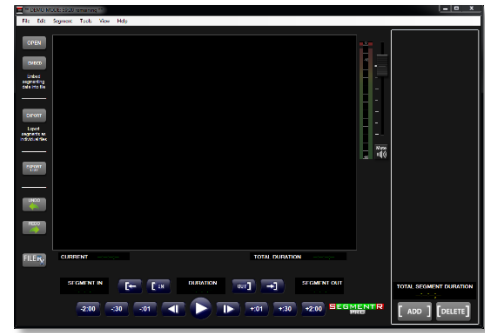


- 4 When the process is complete, you'll see this screen indicating SEGMENTR has been successfully installed.

Click the green Run button to launch the program.

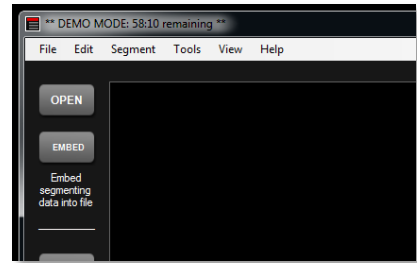


- 5 The User Interface will open, with no file loaded. The features and functions of SEGMENTR are addressed thoroughly in the User Guide.

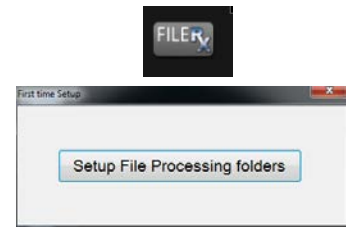


- 6 The Demo period is five days from the date of installation. During that time you can have the SEGMENTR interface open for 60 minutes. There is a countdown timer in the upper left that shows how many run-time minutes remain until the DEMO MODE expires. You can also process five (5) files using FileRx.

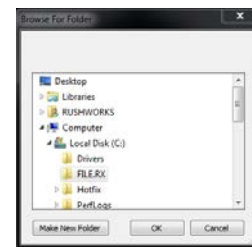
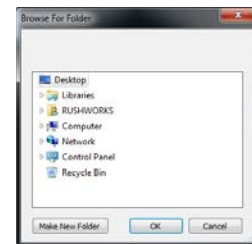
When you purchase SEGMENTR, you'll receive a license key to activate unrestricted program operation.



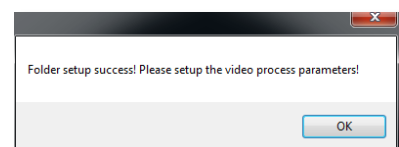
- 7 When you click on the **FILERX** button on the left side of the screen, you'll see the First time Setup dialog you'll use to create the five required processing folders for FileRx. Click the button to begin the setup.



- 8 The Browse for Folder window will open. Click Computer>Local Disk (C) and click on the FileRx folder ... then click OK.



- 9 You should then see this message confirming that the folder setup was a success. To setup the video processing parameters, click OK.



- 10 The Options window will open. There are two tabs: **System Configuration** and **Folders**.

Please refer to the SEGMENTR User Guide for a complete overview of the settings and functions on the System Configuration tab.



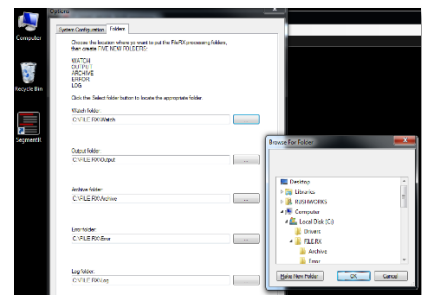
- 11 Click the **Folders** tab and you'll see the location and names of the five folders created during the installation.

Please refer to the SEGMENTR User Guide for a complete overview of the settings and functions on the Folders tab.



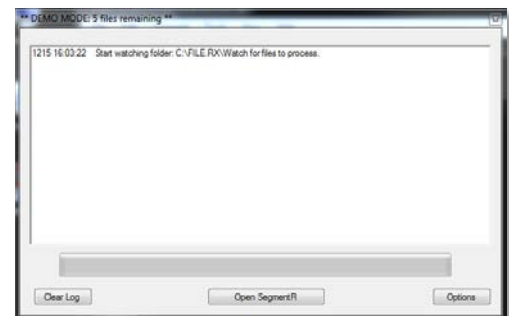
- 12 If for any reason you want to change any of the five folder locations, just click the Browse for Folder button to the right of each current folder path.

Select the desired destination from the Browse window.



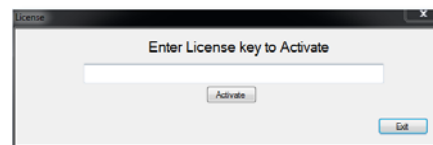
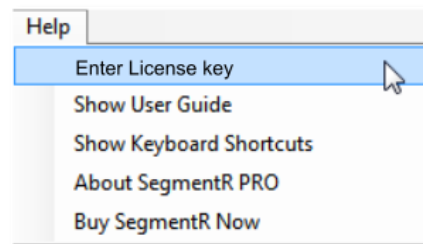
- 13 Once you've completed the setup procedure for FileRx, the processing log window will open. FileRx runs as a background process and is always active in the system tray unless you click the program icon in the system tray and select Exit the application.

Please refer to the SEGMENTR User Guide for a complete overview of the FileRx processing workflow.



- 14** After you purchased SEGMENTR PRO through PayPal or direct from RUSHWORKS, you'll receive a License key you'll enter to permanently Activate the program.

Under the Help menu, select Enter License key, and the entry window will appear. Copy your License key as provided to you in an email, and paste it into the field. Click Activate and your License is valid for use on one computer.



www.RUSHWORKS.tv

888.894.7874 ext 2 (Support)
support@RUSHWORKS.tv